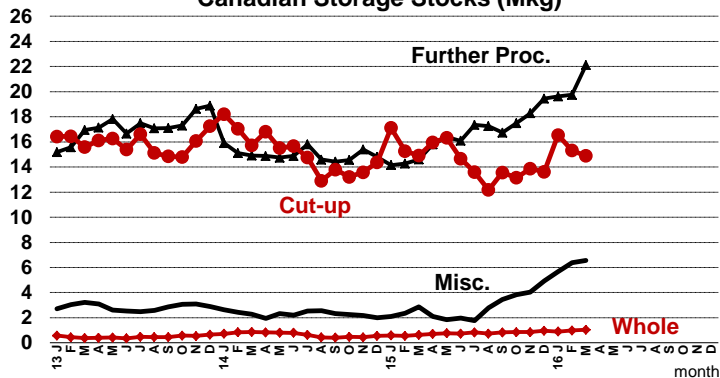


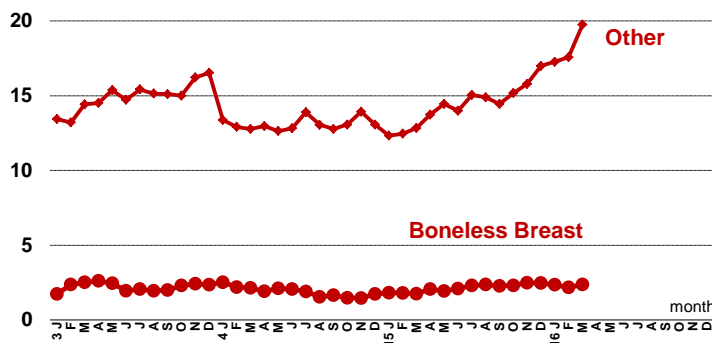
Canadian Chicken Storage Stocks (Source: AAFC)

000 KG	Mar-16	Feb-16	Change	Mar-15	Change	Mar-14
TOTAL	44,639	42,436	5.2%	33,014	35.2%	33,786
excl. Misc. & lq	33,540	30,900	8.5%	25,238	32.9%	28,405
Whole	1,041	989	5.3%	640	62.6%	869
Cut-Up	14,901	15,313	-2.7%	14,904	0.0%	15,733
CU - Legs	4,529	5,144	-12.0%	4,903	-7.6%	3,110
CU - Breasts	5,564	5,112	8.9%	4,221	31.8%	5,809
- Bnls Breasts	4,289	3,789	13.2%	3,212	33.5%	3,579
- Other Breasts	1,276	1,323	-3.6%	1,009	26.4%	2,230
CU - Wings	3,292	3,417	-3.7%	2,696	22.1%	4,354
CU - Other	1,516	1,640	-7.6%	3,084	-50.8%	2,461
Further Proc.	22,128	19,742	12.1%	14,597	51.6%	14,912
FP - Breasts	2,381	2,173	9.6%	1,755	35.7%	2,147
FP - Other	19,747	17,569	12.4%	12,842	53.8%	12,766
Miscellaneous	6,570	6,391	2.8%	2,873	128.6%	2,271

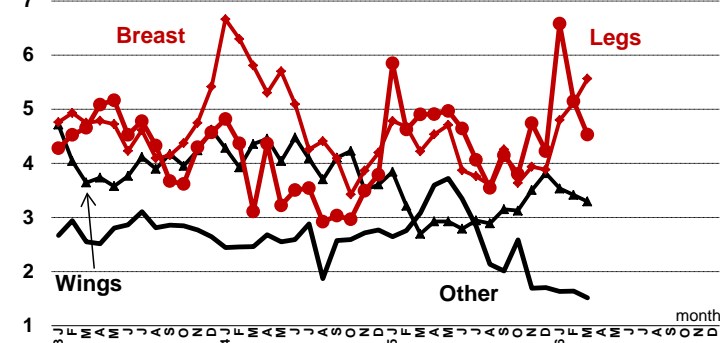
Canadian Storage Stocks (Mkg)



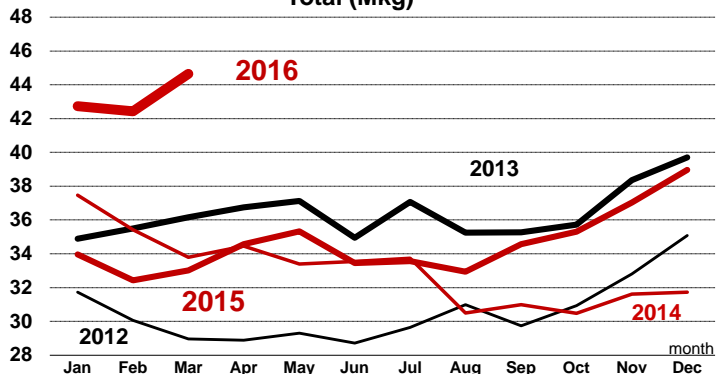
Further Processed (Mkg)



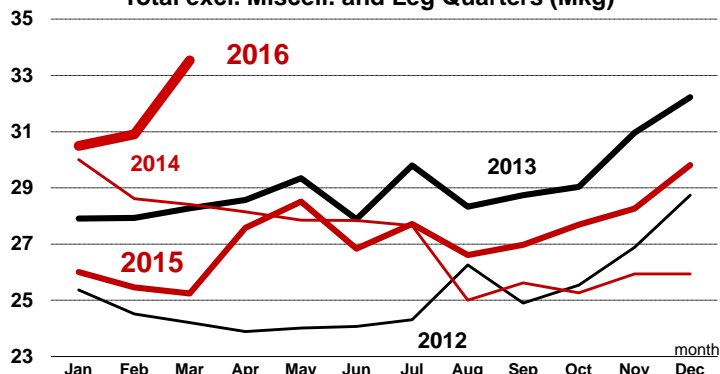
Cut-up (Mkg)



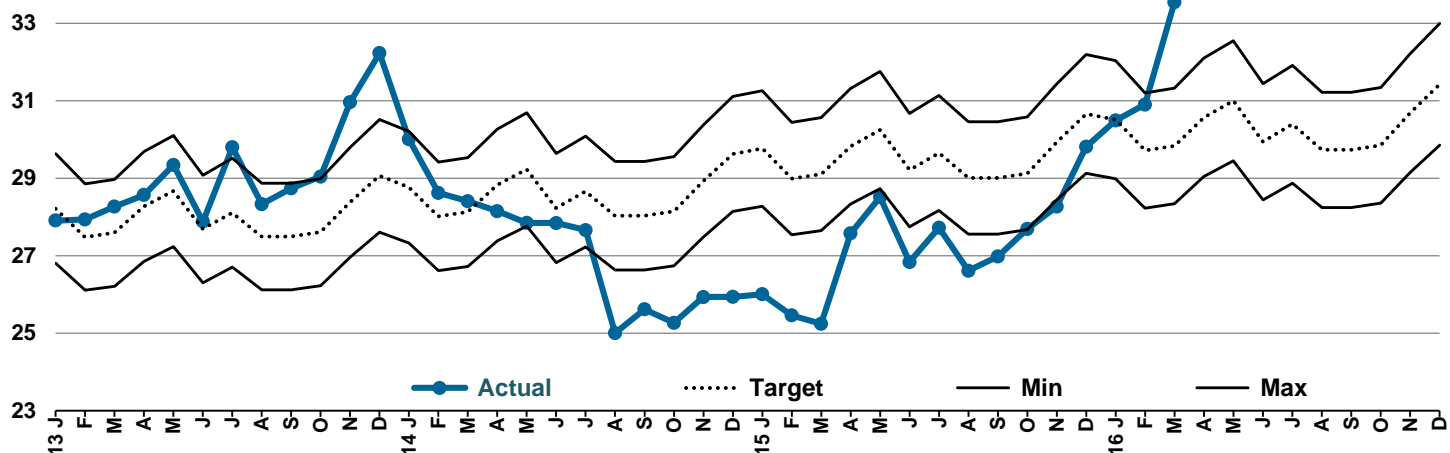
Total (Mkg)



Total excl. Miscell. and Leg Quarters (Mkg)



Domestic Storage Stocks vs healthy ranges (Mkg)



March 16, 2016

* Annual **target values** for domestic stocks are calculated using the ratio between annual domestic production and average yearly domestic stocks, using the most recent seven years of data. Monthly stock seasonality factors, also calculated using the most recent seven years (2009-2015) of data, are then applied to the annual target to calculate the monthly targets. **Healthy Ranges** are set 5% above and below the monthly target.