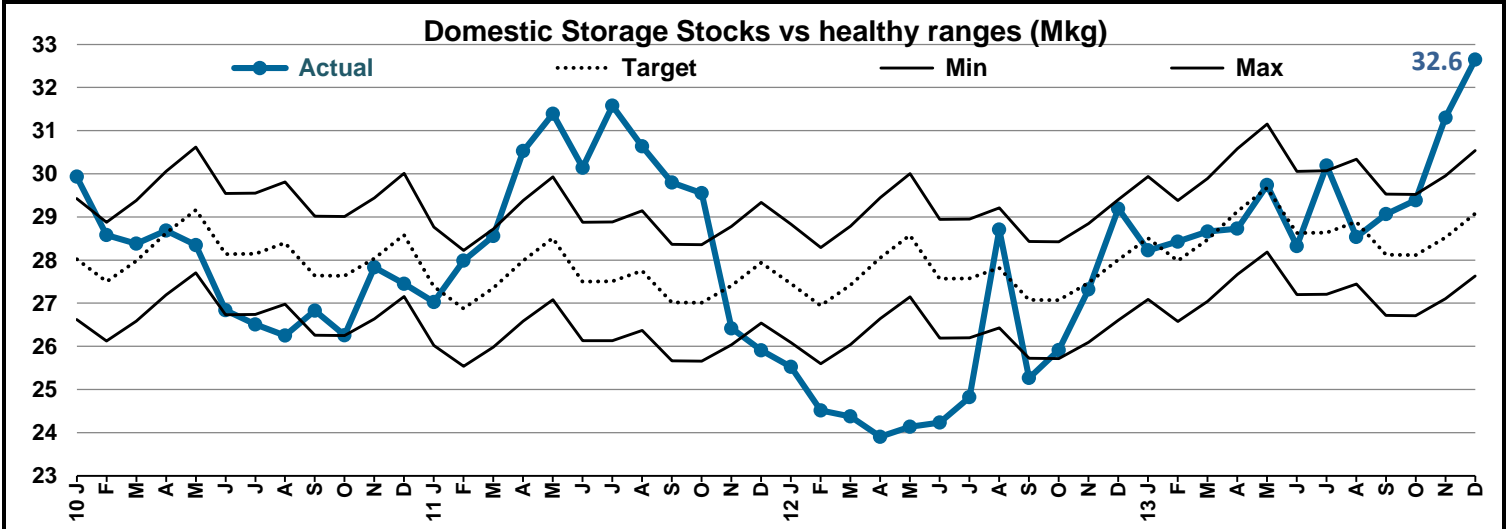
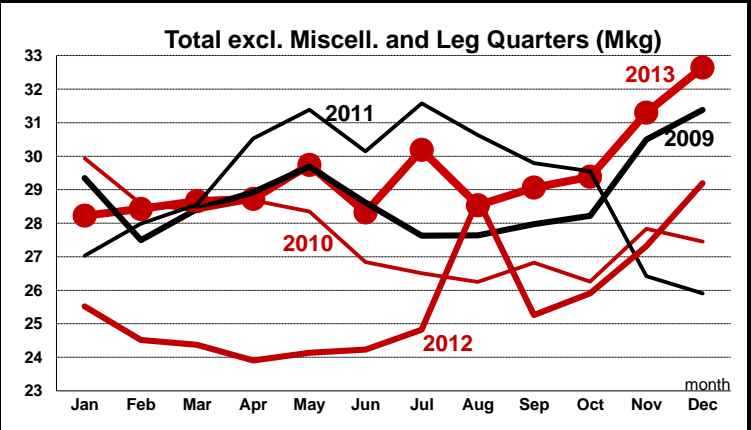
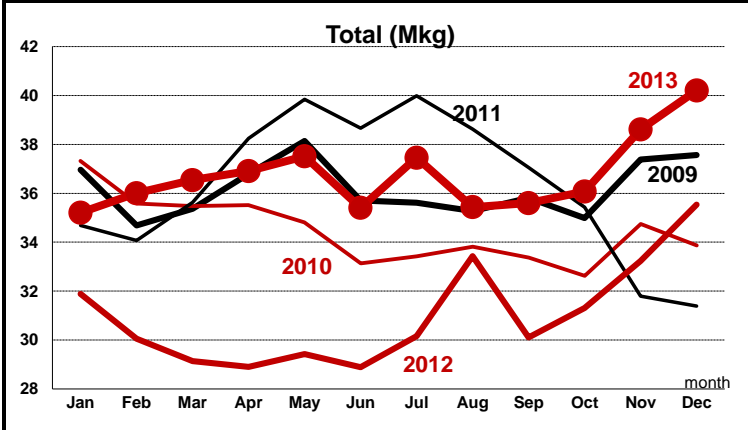
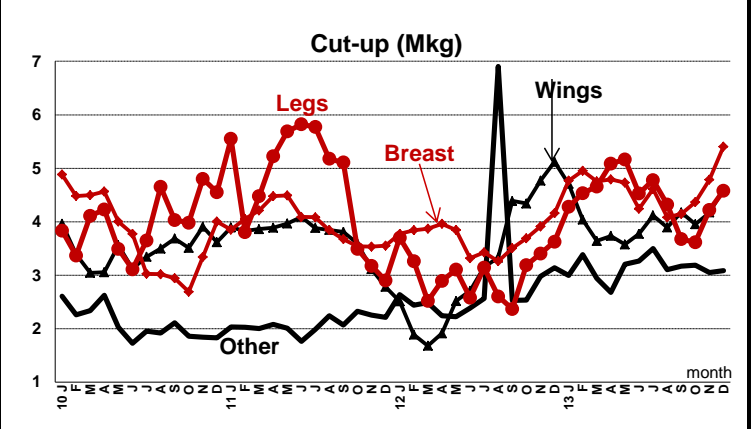
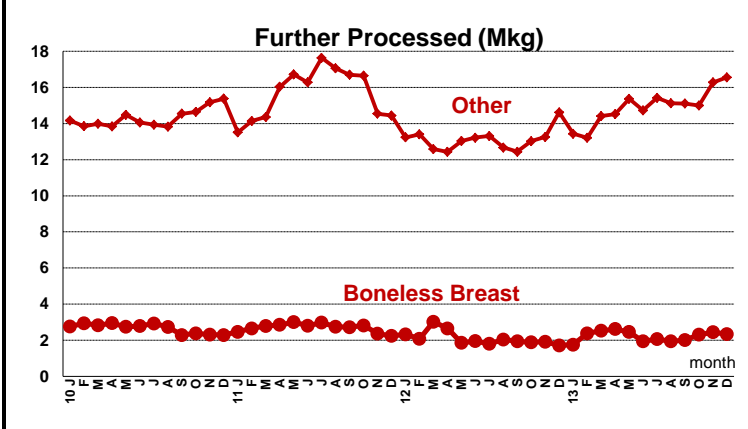
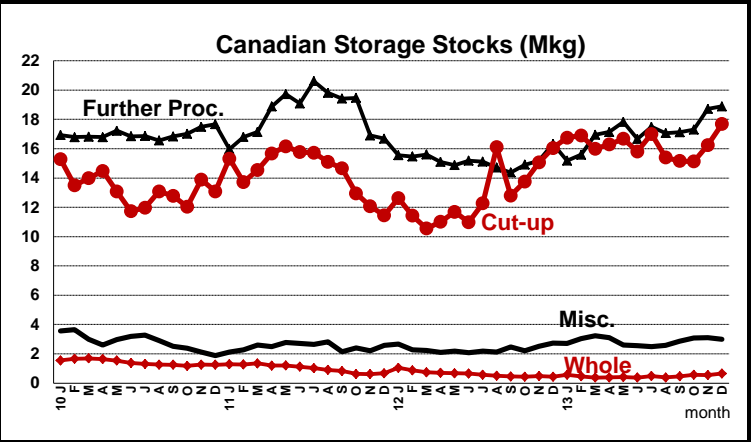


Canadian Chicken Storage Stocks (Source: AAFC)						
000 KG	Dec-13	Nov-13	Change	Dec-12	Change	Dec-11
TOTAL	40,212	38,612	4.1%	35,543	13.1%	31,388
excl. Misc. & lq	32,647	31,298	4.3%	29,193	11.8%	25,907
Whole	656	554	18.4%	440	48.9%	674
Cut-Up	17,681	16,247	8.8%	16,046	10.2%	11,445
CU - Legs	4,581	4,217	8.6%	3,627	26.3%	2,900
CU - Breasts	5,405	4,788	12.9%	4,158	30.0%	3,551
- Bnls Breasts	3,370	3,026	11.4%	3,485	-3.3%	-
- Other Breasts	2,035	1,762	15.5%	673	202.2%	-
CU - Wings	4,609	4,171	10.5%	5,119	-10.0%	2,780
CU - Other	3,086	3,050	1.2%	3,141	-1.8%	2,214
Further Proc.	18,891	18,715	0.9%	16,334	15.7%	16,688
FP - Breasts	2,342	2,441	-4.0%	1,715	36.6%	2,248
FP - Other	16,548	16,274	1.7%	14,619	13.2%	14,440
Miscellaneous	2,985	3,096	-3.6%	2,723	9.6%	2,582



* Target Values for domestic stocks are calculated using an equation that is based on yearly domestic disappearance, average yearly domestic stock values and monthly seasonality factors. Healthy Ranges are set 5% above and below the target for domestic storage stocks.