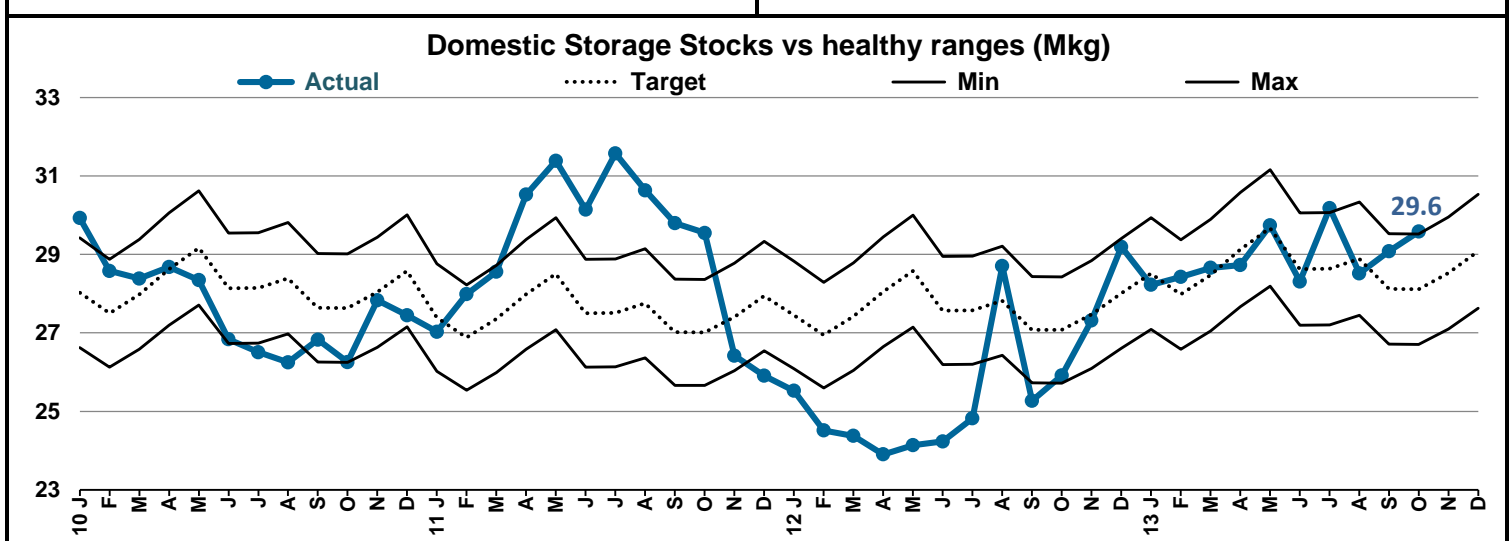
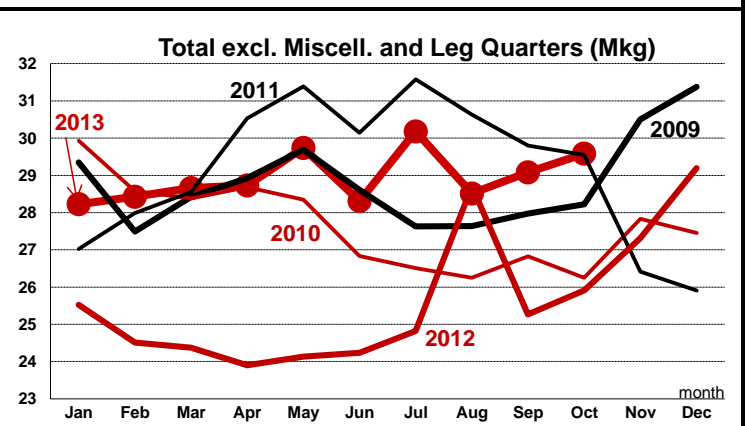
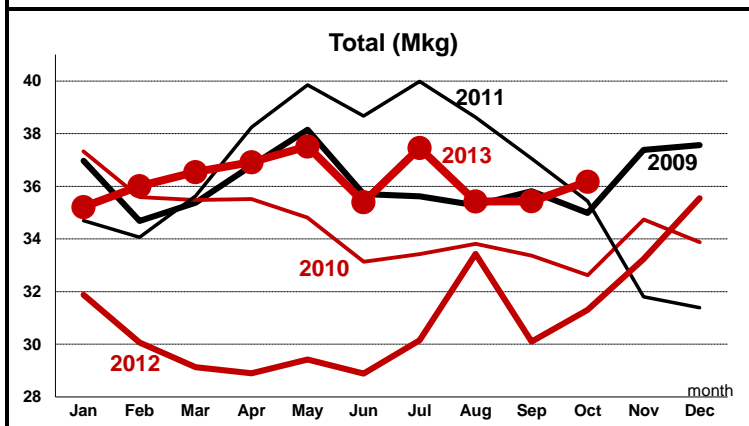
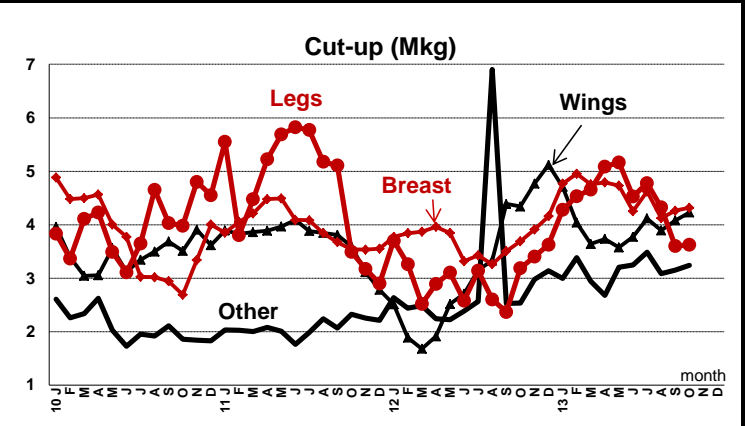
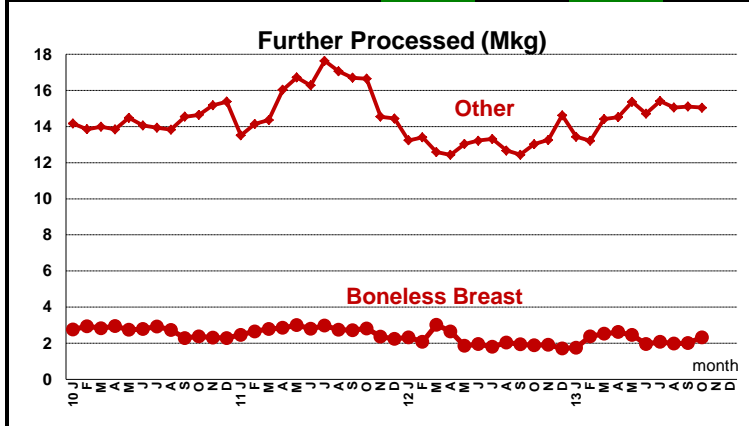
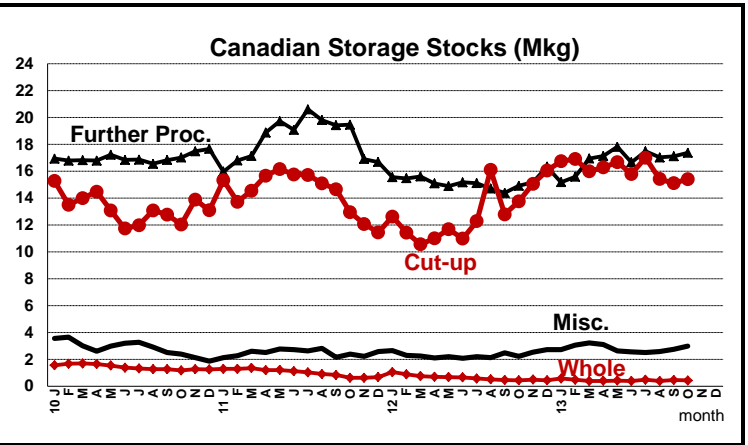


Canadian Chicken Storage Stocks (Source: AAFC)						
000 KG	Oct-13	Sep-13	Change	Oct-12	Change	Oct-11
TOTAL	36,174	35,430	2.1%	31,309	15.5%	35,435
excl. Misc. & lq	29,581	29,081	1.7%	25,913	14.2%	29,549
Whole	426	457	-6.8%	441	-3.5%	626
Cut-Up	15,408	15,116	1.9%	13,752	12.0%	12,947
CU - Legs	3,623	3,602	0.6%	3,186	13.7%	3,492
CU - Breasts	4,316	4,263	1.3%	3,692	16.9%	3,537
- Bnls Breasts	2,784	2,823	-1.4%	2,869	-2.9%	-
- Other Breasts	1,532	1,439	6.4%	823	86.2%	-
CU - Wings	4,228	4,080	3.6%	4,340	-2.6%	3,592
CU - Other	3,241	3,151	2.8%	2,535	27.9%	2,325
Further Proc.	17,370	17,111	1.5%	14,906	16.5%	19,469
FP - Breasts	2,326	2,009	15.8%	1,884	23.4%	2,819
FP - Other	15,045	15,102	-0.4%	13,021	15.5%	16,650
Miscellaneous	2,969	2,746	8.1%	2,211	34.3%	2,394



October 21, 2013

* **Target Values** for domestic stocks are calculated using an equation that is based on yearly domestic disappearance, average yearly domestic stock values and monthly seasonality factors. **Healthy Ranges** are set 5% above and below the target for domestic storage stocks.